



User's Manual
Magento Extension
eDream Fixed Header

eDream Market
www.edreamag.com
support@edreamag.com



eDream Fixed Header for Magento

Modern, Simple and Professional

eDream Fixed Header is a **unique extension** that adds an **extra function** to your shop. Our solution fixes the upper part of the website even when the page is scrolled up / down. The logo, navigation menu, contact or shopping cart will be more efficiently promoted and will remain permanently seen and at clients hand. **Fixed Header** is lately one of the most popular tendencies in webdesign.

Using the newest **HTML5** and **CSS3 programming techniques** and **technologies** we have created **eDream Fixed Header** so that the important information never will be lost from sight when a webpage is scrolled down.

Socializing websites as **Facebook** and **Twitter** started to use fixed headers. It doesn't matter how far downwards in page you have navigated, in order to check your friend's updates and messages you can always see the website heading with navigation links and account settings.

Navigation is now much easier

Being one of the most important functions of a website, navigation must be easy to use and at hand so that the users would be able to access the needed information in the shortest time possible. Using **eDream Fixed Header** will make the navigation much easier in your web site so that the user will not be forced to scroll back to the upper part of your page because the header will be always visible.

Save more time

There are lots of similarities between websites with fixed headers and PC software, for example **Word** or **Photoshop**. Imagine how it would be if you create a text document containing 30 pages and you are forced to go back to the first page to save the document. The same is valid also in case of website users. They don't want to scroll up the website to find the contact page or categories of products of online shop. With fixed heading at the upper part of the screen the users can **navigate faster** and **handier** through your site in a record time.

Maximum promotion capacity of your brand

Besides a fast and easy navigation our extension offers another important advantage, namely, the maximum promotion capacity of your brand. How we manage to do that? Generally the headers contain the name and logo of the business. **eDream Fixed Header** will display and fix the header permanently in the center of the attention of your clients. Most of the users will see the logo and name of your business and for certain will memorize and recognize it in the future.

User will return for sure

Using **eDream Fixed Header** you have the guarantee that your users will feel themselves in control throughout the website viewing. Installing the extension on your website you will significantly reduce the time allocated to scrolling or searching, allowing the visitors to locate the needed information with minimum effort. Offering the clients all these advantages they will surely return to your website and will recommend it to other persons.

Compatibility

This extension supports **Magento Community Edition 1.5.x** (1.5.0.1, 1.5.1.0), **1.6.x** (1.6.0.0, 1.6.1.0, 1.6.2.0), **1.7.x** (1.7.0.0, 1.7.0.1, 1.7.0.2), **1.8.x** as there are **NO modifications in core files**. And we make sure it will work with any future Magento releases.

Extension Support and installation service

Please use our [support system](#) if you have any questions about extension, but make sure that you have read latest theme documentation. We provide [extension and Magento installation service](#) for extra cost.

Package structure

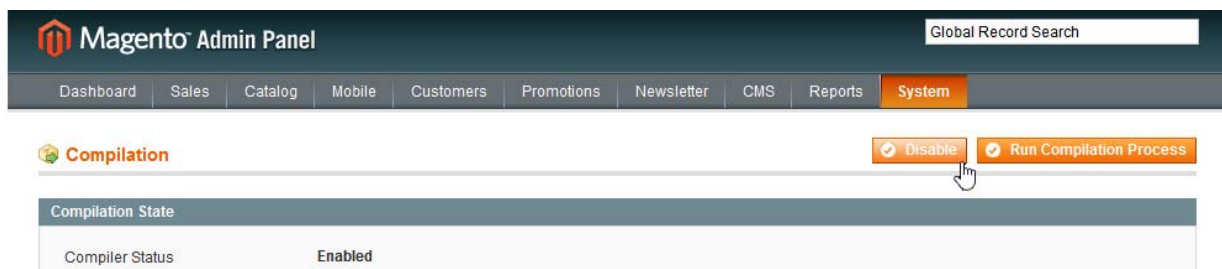
edream_fixed_header.zip

- Edream_Fixed_Header-1.0.5.tgz - extension files
 - **app** folder
 - **js** folder
- Edream_Fixed_Header.pdf - documentation files for current package.
- license.txt – License file.

Installing extension using Magento Connect

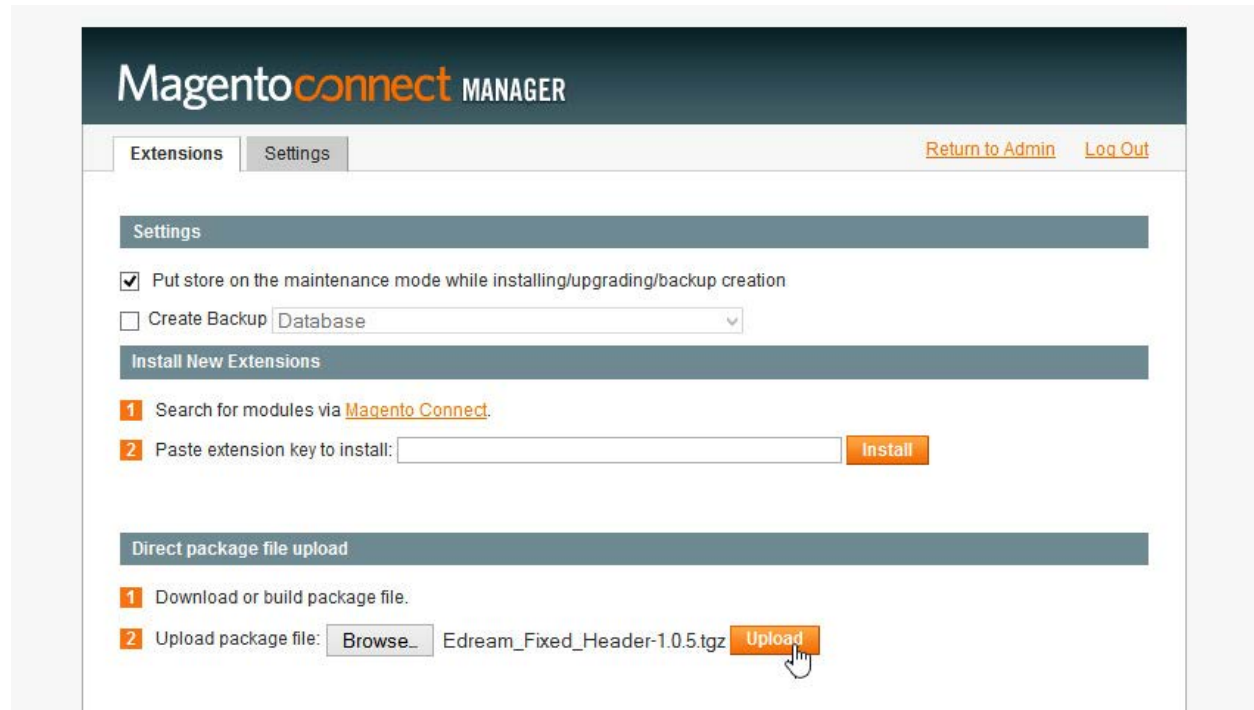
Step 1. Extract the **.tgz** file from the **.zip** file you have downloaded from our shop.

Step 2. In case you use **Magento Compilation** feature, please open menu **System > Tools > Compilation**. In Compilation page, press **Disable** button.

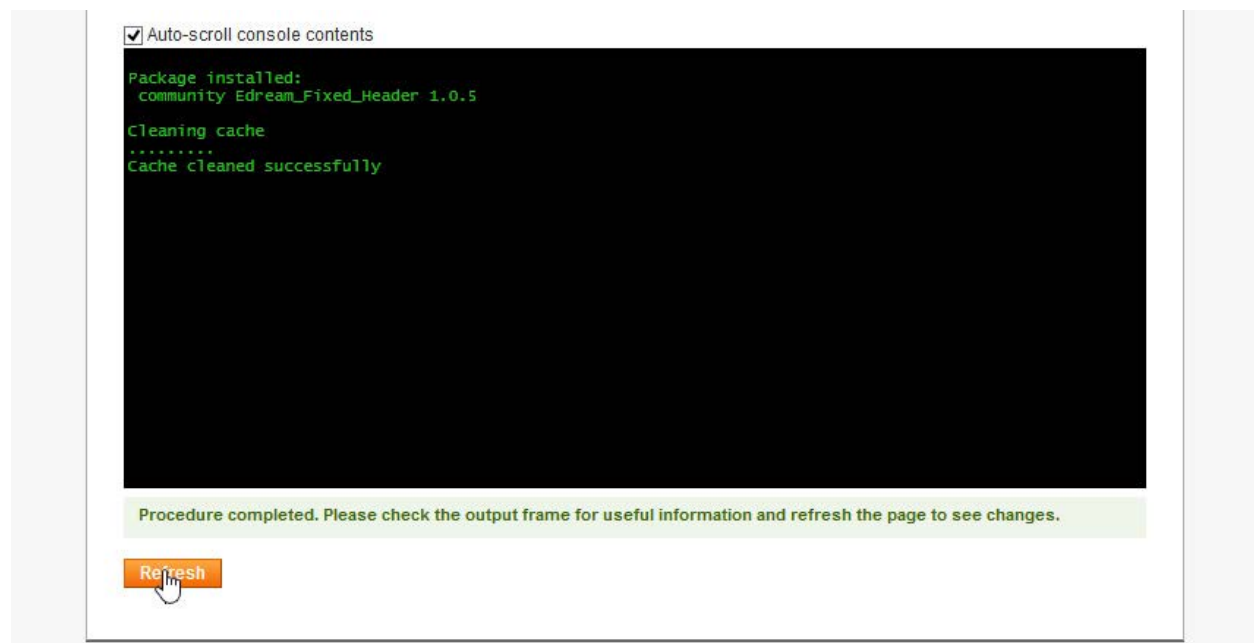


Step 3. Refer to <http://www.domain.com/downloader/>. ('domain' - URL where Magento is installed), then introduce username and password to connect. In case you are already connected to the Magento administration panel select: **System > Magento Connect > Magento Connect Manager**.

Step 4. Press button **BROWSE** and select the file **Edream_Fixed_Header- 1.0.5.tgz** from the location where it was extracted from **.zip** archive, then continue using the button **UPLOAD**.



Step 5. Wait until the upload and install processes are completed. Then press button **REFRESH** that will appear on the bottom of the page under the command line after the successful installation of the extension.

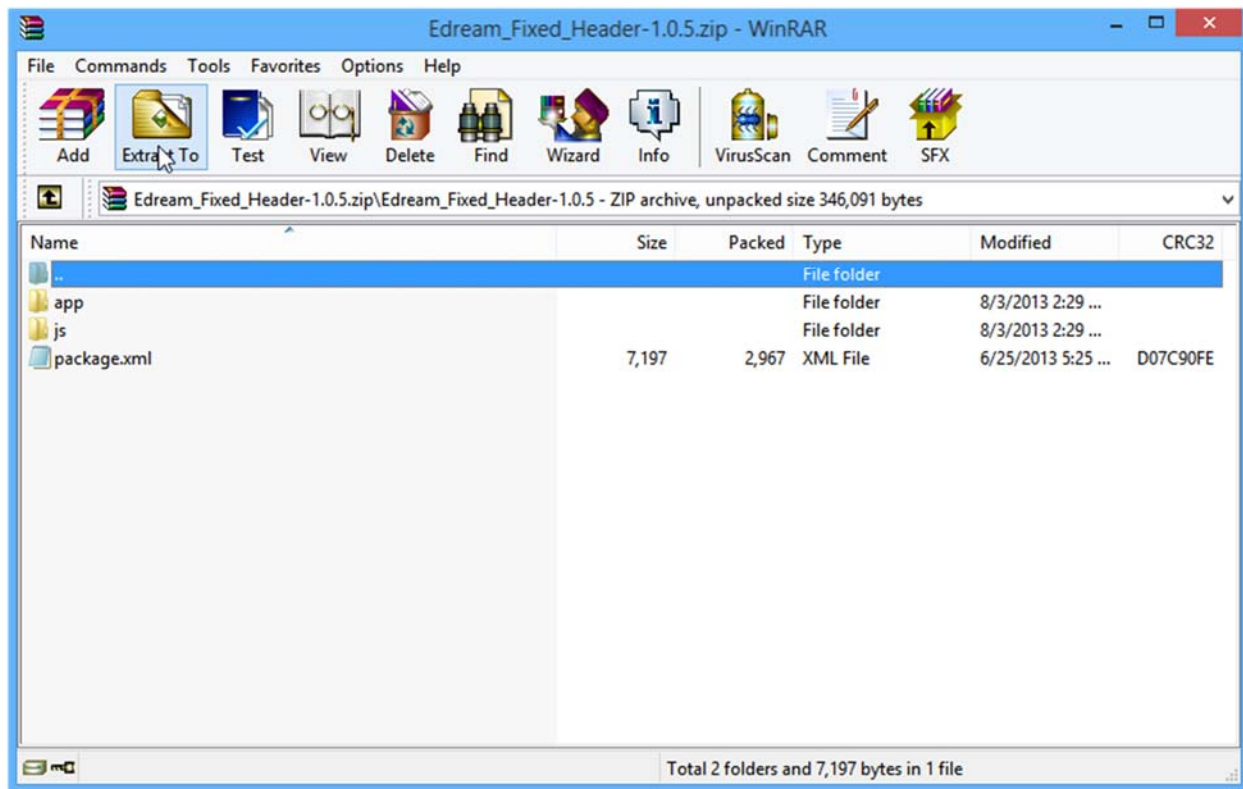


Step 6. Go to www.domain.com/admin or press “**Return to Admin**” from the upper part of the page. If you are already connected to the administration panel of Magento please **log out** and **login** again. Now refresh **Magento Cache**.

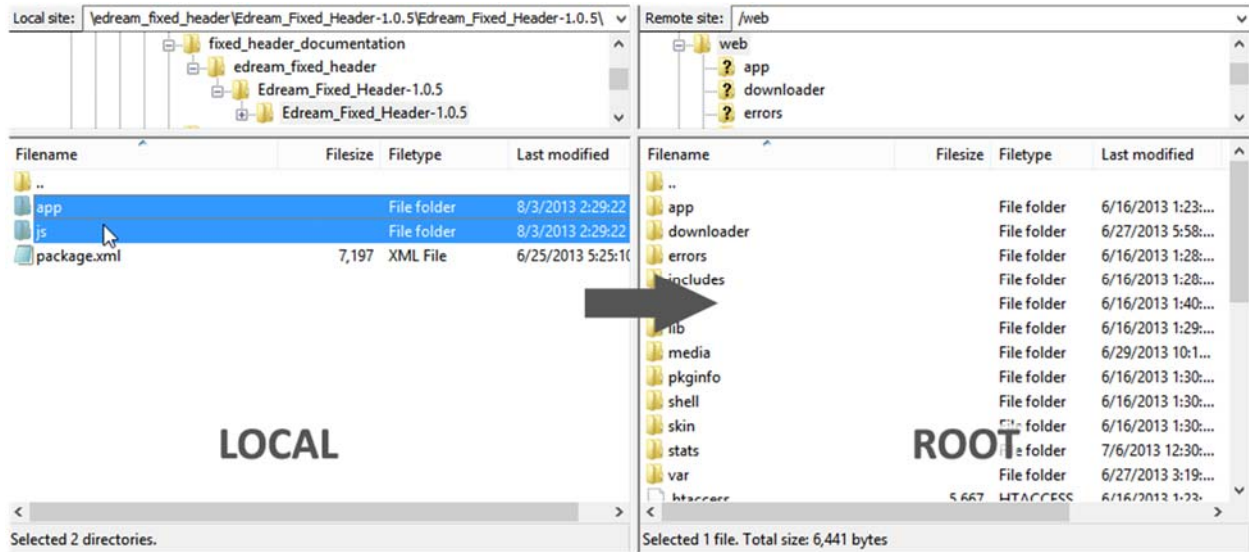
Installing extension via FTP client

Step 1. After you download the extension **edream_fixed_header.zip**, extract the **.tgz** file from the **.zip** file you have downloaded from our shop.

Step 2. Extract all files from **Edream_Fixed_Header-1.0.5.tgz**, using your favorite extraction program (WinRAR, 7Zip, etc).

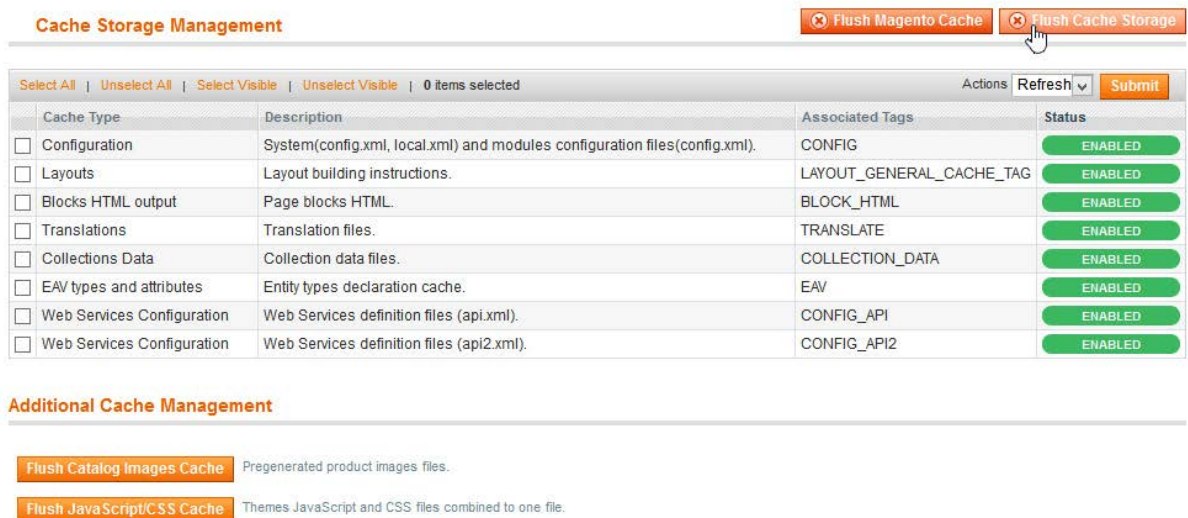


Step 3. Using your FTP client, drag all of the files onto the store root of the Magento instance. In this case we use FileZilla software.



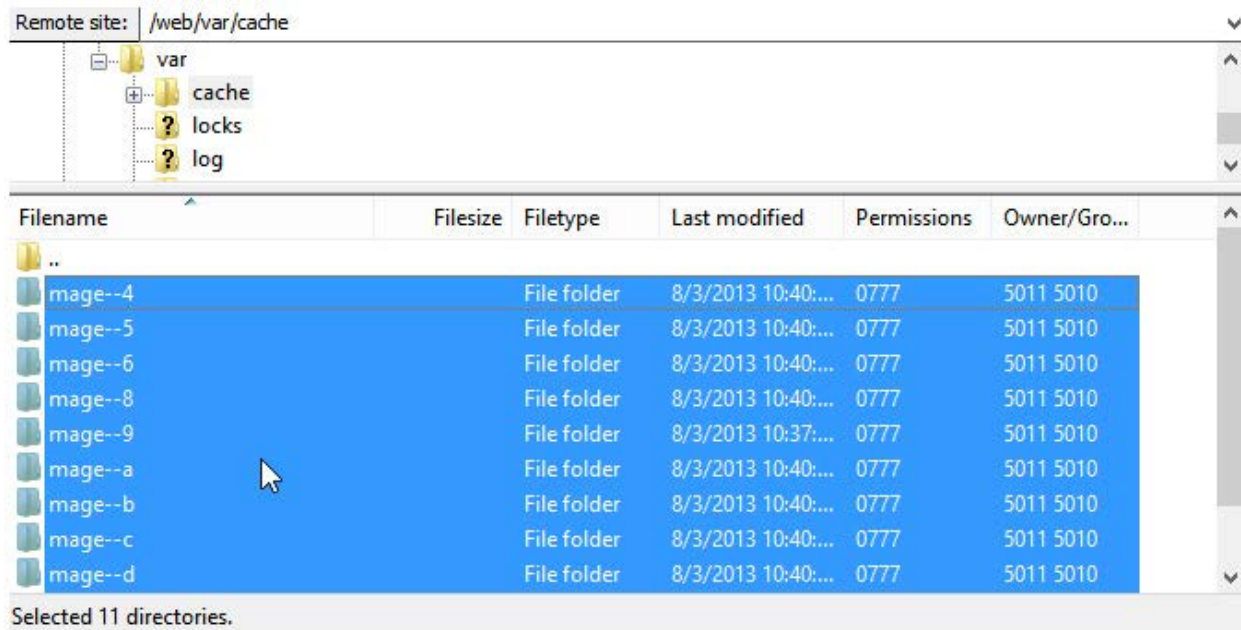
Refresh Magento Cache

- Go to **System ->> Cache Management**
- Click on the **“Flush Cache Storage”** button



OR

Using your FTP client or cPanel File Manager go to Magento root directory and delete all files inside **var/cache** directory. Do **NOT delete var/cache** folder. When you refresh your **Magento Cache**, you should be able to see all the changes you have made.



Custom Installation Settings

If you use the default Magento theme and you wish to have a fixed navigation, you simply open the file **/page/html/header.phtml** and insert the following code: `<?php echo $this->getChildHtml('topMenu') ?>` inside your `<div class="header-container">`.

Fixed Header Settings

Enable jQuery - extension uses **jQuery library**. If you have installed more than one extensions using **jQuery** you can **Disable** jQuery Libraries any time;

jQuery NoConflict Mode - if for some reason two versions of jQuery are loaded (which is not recommended), please enable jQuery NoConflict mode, if your Magento has not yet.

Enable Fixed Header – Enable / Disable Fixed Header;

Custom Header Class – default Magento header has set `"header-container"` class. If you use a Custom Theme go to **/page/html/header.phtml** and check the class name. Let's say, for example, that instead of `<div class="header-container">` your shop uses the `<div`

class="customclass">, in this case the field **Custom Header Class** will be filled with **customclass**.

Fixed Header CSS Settings

Header Width - represents the global width of header. Here you can type pixels (for instance '900px'), a percentage (relative to the width of header, for instance '50%');

z-index - The **z-index** property specifies the stack order of an element. An element with greater stack order is always in front of an element with a lower stack order. **e.g.: 9999**

Position Left / Right – puteti alege pozitia de aliniere a header-ului: left or right;

left - enter a value for **left:** in **px / em / % / vw** or leave it empty. The **left** property sets the left edge of an element to a unit to the left/right of the **left edge** of its containing element. **e.g. 20px**

right - enter a value for **right:** in **px / em / % / vw** or leave it empty. The **right** property sets the right edge of an element to a unit to the left/right of the **right edge** of its containing element. **e.g. 20px**

Position Top / Bottom - puteti alege pozitia de aliniere a header-ului: top or bottom;

top - Enter a value for **top:** in **px / em / % / vw** or leave it empty. The **top** property sets the **top edge** of an element to a unit above/below its normal position. **e.g. 20px**

bottom - enter a value for **bottom:** in **px / em / % / vw** or leave it empty. The **bottom** property sets the bottom edge of an element to a unit above/below the **bottom edge** of its containing element. **e.g. 20px**

Header Opacity - 0 - highest transparency and 1 - no transparency. Note that both the text and the background-color are affected by the opacity level

Upgrading extension

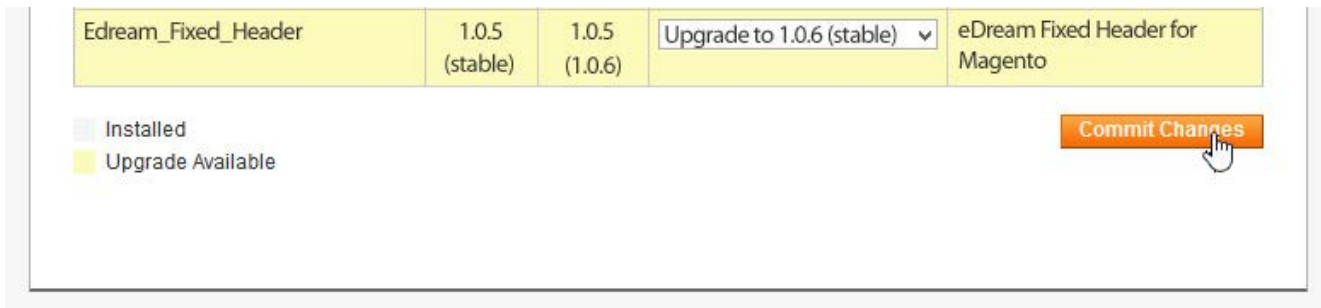
It is recommended to always have the latest version of the extension. Upgrade using Magento Connect.

Step 1. Log in to your administrator backend browse to **System > Magento Connect > Magento Connect Manager**.

Step 2. Hit the button Check for Upgrades.



After the page refreshes, scroll down to the **eDream Fixed Header** extension, it'll be marked yellow in case there's a new upgrade available.



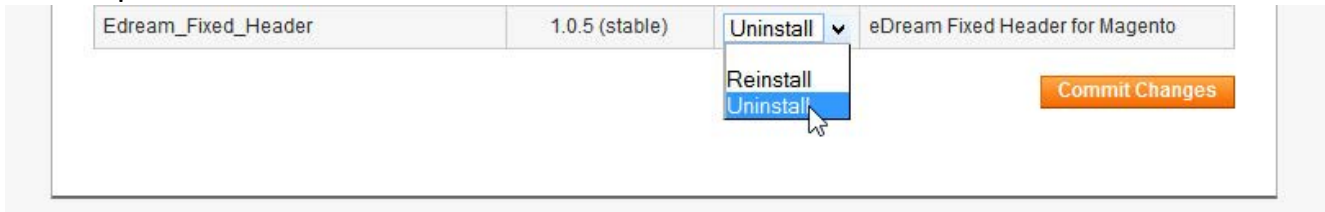
Step 3. Select the "Upgrade to ..." latest stable version in the dropdown next to the extension. Click **Commit Changes** and the module has been upgraded to the latest version.



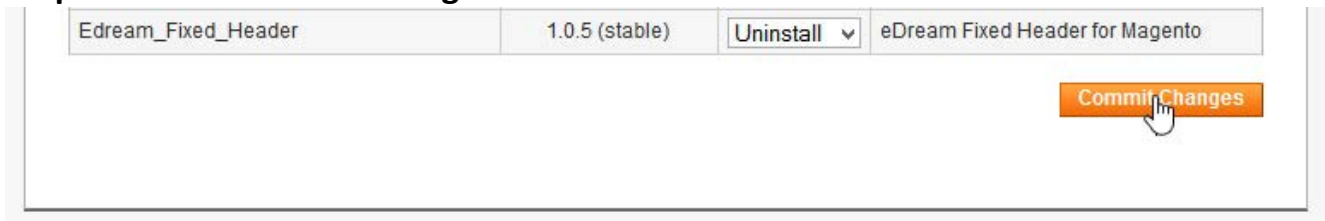
Uninstalling extension

Step 1. Log in to your administrator backend browse to **System > Magento Connect > Magento Connect Manager**.

Step2. Scroll down to the **eDream Fixed Header** extension and select “**Uninstall**” from the dropdown box.



Step 3. Hit the **Commit Changes** button.



Alternatively, prevent Magento from loading the extension by changing the **active tag** from “**true**”

```
<?xml version="1.0"?>
<config>
  <modules>
    <Edream_Slideshow>
      <active>true</active>
      <codePool>community</codePool>
    </Edream_Slideshow>
  </modules>
</config>
```

to “**false**”

```
<?xml version="1.0"?>
<config>
  <modules>
    <Edream_Slideshow>
      <active>>false</active>
      <codePool>community</codePool>
    </Edream_Slideshow>
  </modules>
</config>
```

in the following file: **/app/etc/modules/Edream_Fixed.xml**

TROUBLESHOOTING

Here you will find useful tips for the most frequently asked questions.

EDREAM RESPONSIVE SLIDESHOW IS NOT DISPLAYED ?

- check in **System > Configuration > Fixed Header > Header Settings** if option **Enable Fixed Header**;
- check in **System > Configuration > Fixed Header > Header Settings** if option **Enabled jQuery** is **YES**. ATTENTION in case you use other extensions besides eDream Fixed Header, there is a possibility for them also to use jQuery libraries, which will lead to an inevitable conflict. In this case you can set up **Enable jQuery** to **No**;
- if you use a Custom Theme go to **/page/html/header.phtml** and check the class name.

HEADER SIZE IS ABNORMAL?

- check **Header Width** field in **System > Configuration > Fixed Header > Header Settings**;

I'M GETTING A 404 ERROR?

- you need to **Log Out** from admin and **Login** again to refresh access control system in admin.

Features Highlights

- Easy to Install and use
- 100% Magento Community Edition 1.4.x - 1.8.x compatible
- HTML5
- CSS3
- Unique admin panel with configurable options and features
- Cross browser compatible
- Easily Customizable
- Enable or Disable JQuery
- Enable or Disable NoConflict Mode
- Navigation is now much easier
- Save more time
- Maximum promotion capacity of your brand
- User will return for sure
- No core files changed or modified!
- Well documented, full installation and configuration guide included!
- Excellent FREE support